

VEHCO MOBILE

- > Fleet Management Solution on smartphones, tablets and PDA
- > Android application

” With this solution, I can:

- 1 Use smartphones or tablets to stay connected with my fleet
- 2 Provide my drivers with a modern and user-friendly tool



- + Native application = offline functionality and active when other functions are active
- + Available on a wide selection of mobile devices

Vehco Mobile is a flexible solution based on the use of an Android app for the management of transport orders and drivers. It combines the advantages of an easily accessible solution with the high-end demands of modern telematics.

Vehco Mobile uses an app installed on the Android device of your choice (smartphone or tablet) and a webpage accessible 24/7 from any computer to always stay in contact with your drivers. This solution does not require any connection to the vehicle and is therefore particularly adapted when drivers often change vehicles or with subcontractors or rented vehicles.

In the field, your drivers will enjoy a modern, user-friendly interface thanks to the integration of some smartphone functionalities such as reminders, sound and light notifications and swipe gestures.

Vehco Mobile is really fast and easy to install. Apart from GPS and Android OS, it does not require any embedded equipment and, therefore, vehicle immobilization or interventions on your fleet are not necessary.

CHOOSE YOUR MOBILE DEVICE!

You can either install the app on your own hardware or benefit from Vehco's packaged solution:

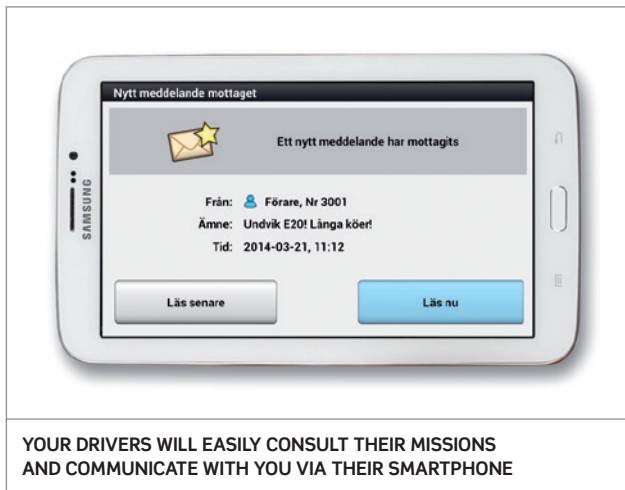
1. Bring Your Own Device

Vehco App can be installed on any mobile device supporting Android applications. The device selected should fulfill some basic requirements or appear on Vehco's White list for full security. Vehco will provide you adapted service including software and support. You will have the freedom to manage your SIM Card and data services yourself.

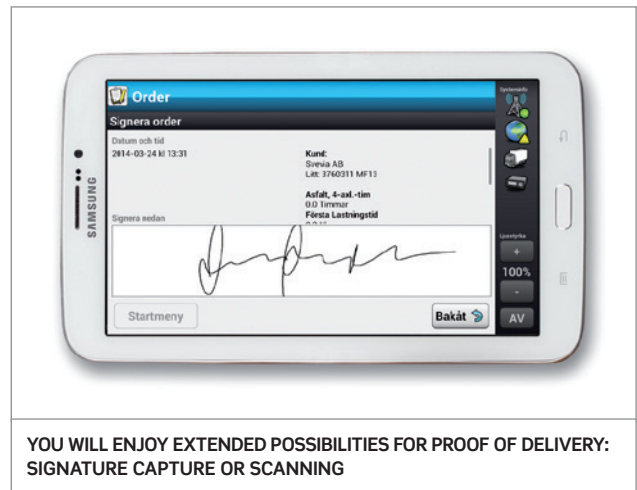
2. Buy a device by Vehco

You will benefit from enhanced technical support and after-sales services:

- If you need more information on how to use the device, our call center can help. The team has deep knowledge and experience of the equipment.
- If a device is defective, we have an efficient after-sales process to repair or replace the equipment.



YOUR DRIVERS WILL EASILY CONSULT THEIR MISSIONS AND COMMUNICATE WITH YOU VIA THEIR SMARTPHONE



YOU WILL ENJOY EXTENDED POSSIBILITIES FOR PROOF OF DELIVERY: SIGNATURE CAPTURE OR SCANNING

Features available with Vehco Mobile*

Drivers' Positioning, Tracking and Geofence

Order Management

Vehicle Check**

Messaging

Navigation

Reports on:

- Fuel consumption
- Vehicle Maintenance (Checklists)

* For more information on the different features, please refer to our module descriptions.

** To be released during winter 2014-15.

Requirements

Screen resolutions:

- 1024 x 600
- 1280 x 720

Android Operating System: 4.1 (Jelly Bean) or later

Benefits

Configurable graphical user interface (GUI) to easily match work process

Available on a wide selection of mobile devices

Possibility to record a digital signature

Offers all key features required by transport companies normally only found in bundled solutions

Quick response time and better capacity

No duplicate devices for drivers
(phone + Touch screen or PDA)